

Antoine Corridor Livable Centers Study



A Livable Center is a mixed-use place that:

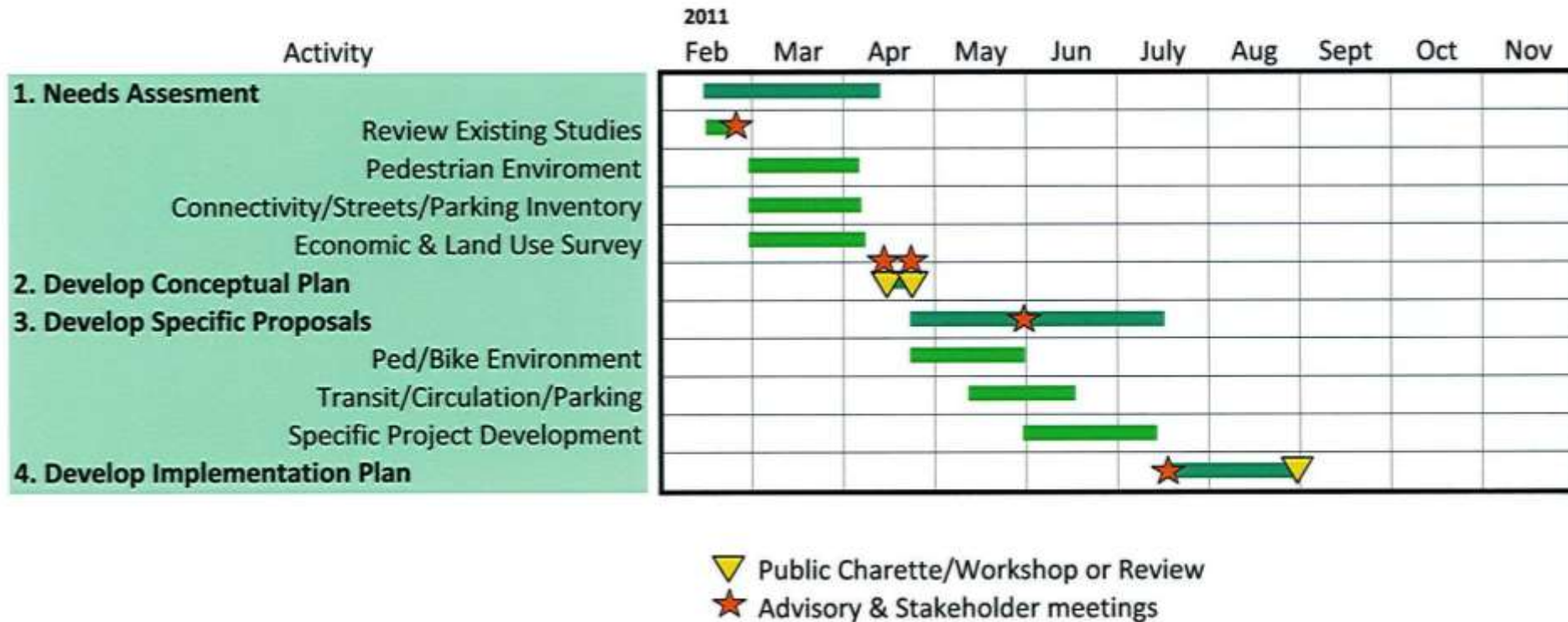
- **Provides multimodal transportation options**
- **Improves environmental quality**
- **Promotes economic development**

Livable Center Study Area:

- Approximately one-mile section of the Antoine Drive corridor
- From West Tidwell Rd on south to edge of Inwood Forrest at north
- From White Oak Bayou & Vogel Creek on east to railroad on west



Near Northwest Management District Livable Center Study



Vision Statement

Transform Antoine into a destination intertwined with the waters of White Oak Bayou and Vogel Creek , linked to the heart of Houston by waterside trails, punctuated by unique parks, community gardens, and reborn as a walkable, bikable mixed-use corridor anchored by landmark buildings, lively public spaces and served by enhanced transit.

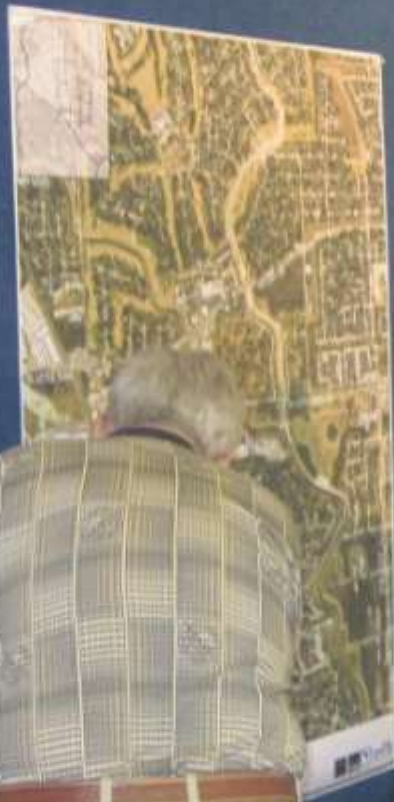
Study Area

one-mile section of
ive corridor.

h of West Tidwell
ge of Inwood Forrest

ak Bayou and Vogel
east to the railroad on

and A. Whittington
Public Works







Areas that can be utilized during emergencies

- 1) Cool Down facility
- 2) Shelter in place
- 3) Safe Evacuation shelter
- ie. Hurricanes - floods

Public Stage in shopping areas to bring in bands & singers during evening & weekend shopping

Restoration of abandoned school in good way of old & golf course

In the w. golf course - restoration small the restoration area - a little bit

Make duck ponds area a picnic area

✓
✓
✓
✓

need lots of wildflowers along bayou & creek

Common area by the Bike Trail w/ water fountain
Where people can sit - add a benches / water feature, ice cream vendor

Widened sidewalks resurfaced with brick and planter box enhancements

benches

Remember about the kids around the water

Privacy

DOG PARK

ALABONSON PARK
(N. Houston - Rosslyn) is a potential "jewel" awaiting development and recognition.

Shared green space between

SPhomes & multi-family complex

where kids & families come together

Community garden → farmers' market

NATIVE AREAS
MAYBE AN ARBORETUM

ATHLETIC FACILITIES
TO KEEP KIDS ENGAGED
OUT OF TROUBLE

SUSTAINABLE LANDSCAPING
- use of natives - less dependence on irrigation

I saw concrete benches on Leshie's in heights each concrete reinforced bench is held up by sides that are rabbits, pigs, frogs, etc.
CURED concrete may be these decorative

Tennis courts



Security (need to feel safe) ✓
 AN ABSENCE OF SECURITY CAMERAS ✓
 AN HPD STORE FRONT. ✓

farmers market ✓
 (smiley face) Market ✓
 More Security ✓
 Police substation @ Antoine ✓
 Viet

old Black bus stop ✓
 Add a central area for retail; remove all of the strip centers and have one centralized area.

I agree -- I like all the work I see black in Area's home -- that's its history ✓

ADD BUSINESS PARK District? Artists, etc ✓
 Festivals: art, crafts, food festival ✓

a farmers market is likely to draw in non-residents ✓
 than even the finest hike-and-take (nobody's coming to the Hood to "exercise")
 to the produceemporium? but a great work.

Yes Please ✓
 Restaurants ✓
 Park Benches ✓

Centralized Town Center with retail, entertainment and commercial space ✓

need restaurants in area ✓

Hallmark Card Shop ✓
 Bakery ✓
 Starbucks ✓
 Toy Store ✓
 mini-mall outdoors ✓
 Bookstore ✓
 Ice cream shop ✓
 Large Grocery Store ✓
 H.E.B. ✓
 where do I eat tonight? ✓

I want to see a center @ 10th & Kalamazoo. ✓
 I want to see another Center @ Antone, Tidwell, Family Oriented, Arts & Crafts/Books for the seniors/ kids for the kids/roller skate w/ sports shops/ Bowling etc. Just a center for good clean fun for the whole family

Develop a common Signage on street signs to define the area, like "Spring Branch/Galleria, etc."
 Develop a theme/LOGO/ Symbol to represent the Northwest Area (Bad Example is NEND - you get the picture) So residents can have a common bond can eventually put LOGO on everything + use as guidelines in District. So people in the distant future will see K.W. "why do you like living in NEND" - for I should see what is NEND



Ethnic Restaurants ✓
Antique Center
Open Air Farmer's Mkt

apartments with
elevators that make
them senior +
handicap
friendly

PET CONTROL

FOOD TRUCK
MEETING AREA

Allocation that
embraces the
imitable qualities of
the area. Like green
space, ethnic - open air
cafes, that cannot be
found outside of here.
If you put in a
Starbucks, Quiznos, and
other places that are
everywhere, then you
have no where special.

JR Bata

BUSINESSES Responsible For
TRASH Cleanup. ✓✓✓

✓ Get Rid of empty
Strip Shopping Centers ✓

✓ Internet Cafe/coffee/Jazz ✓

GOLF:
DRIVING RANGE ✓
PAR 3 COURSE ✓✓

Provides opportunity
for economic development
Farmers Market w/ associated
Community farms & community garden plots
available for rent Gardens can also
be a place to gather as a community
& to learn about where & how it is grown.
Land use & environmental Stewardship
Certified kitchen space to foster micro
businesses to make prepared foods. ✓

QUALITY RETAIL

Central Market
Type Store (new)

I want a resort type
building in a mini town center
a. Travel book store
b. Day Spa
c. Vermont (Type Store) Catalog
d. Similar to the Strand
Lots of fun colors/wood

Artist Studios -
Similar to Craftmen Center
in Museum District. ✓

affordable housing for artists +
include work space + community
Retail space

Plan for Cultural Policy
to give the community
a sense of place









Antoine Corridor Vision Survey



Creating a vision for the Antoine Corridor Study Area



Show sets of images by topic

Creating a vision for the Antoine Corridor Study Area



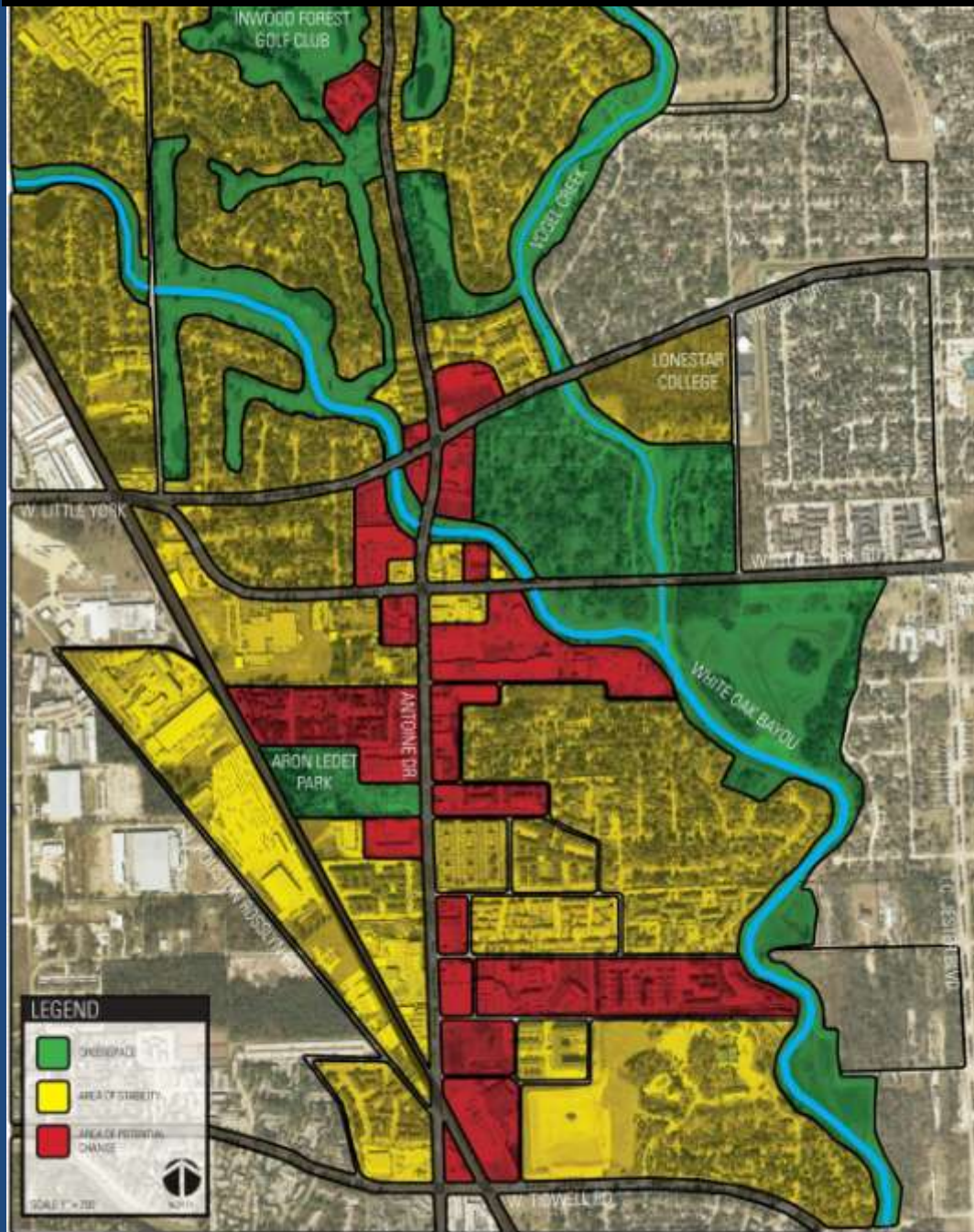
*Each image represents
a different possibility*



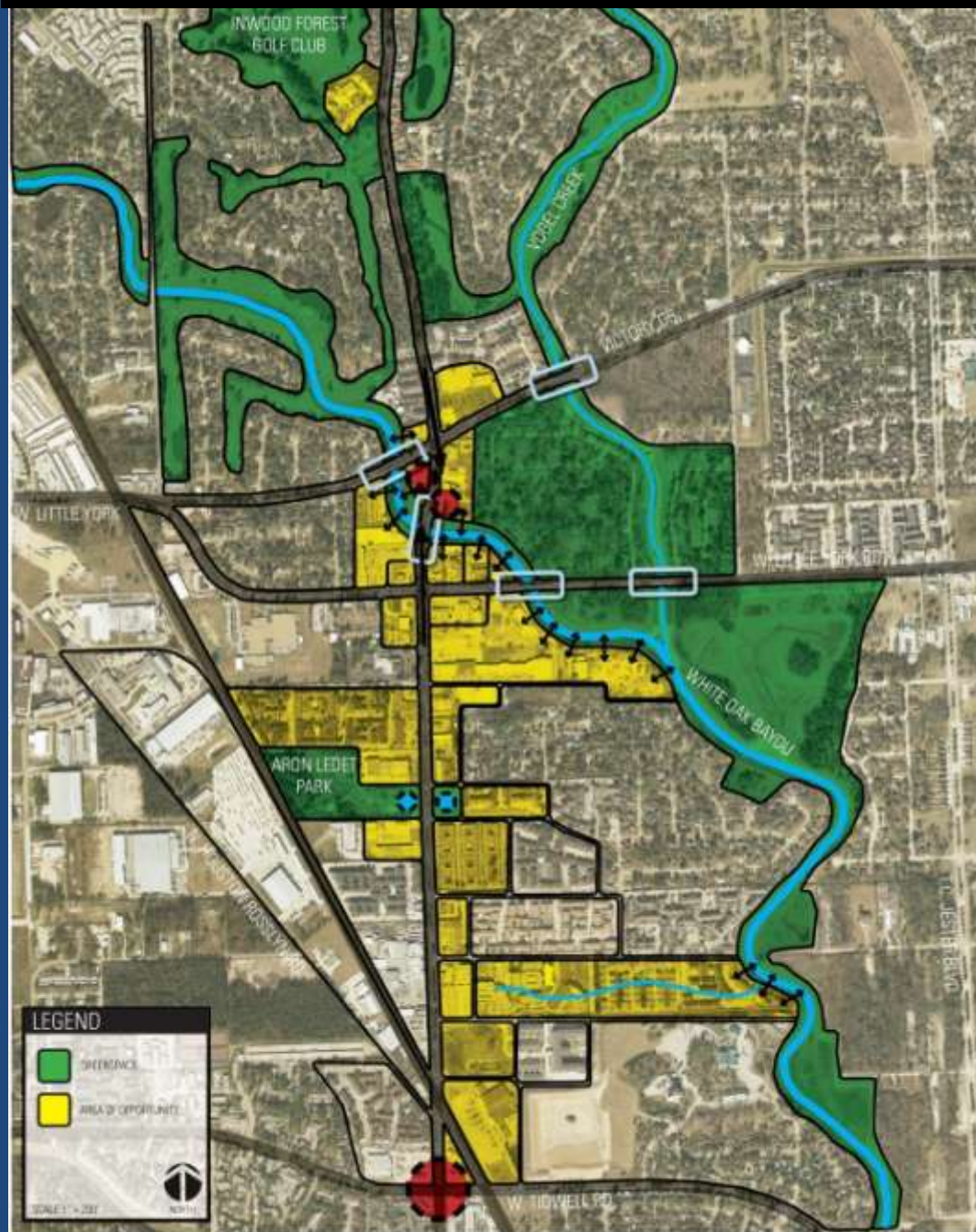
KEY MAP



Areas of Potential Change



Opportunities Areas





Leverage this strategic location with upgraded transit connections

Challenge: A location with proximity to the airport, Galleria, downtown and other employment areas, but limited and lengthy connectivity.

Opportunity: Establish express service signature bus lines that allow residents to live, walk and ride transit to jobs while reducing traffic and increasing pedestrian activity on Antoine.

The Triangle







Redefine our relationship to water

Challenge: Historically, water has been seen as an enemy attacking this area with flooding and requiring extensive repair and rebuilding.

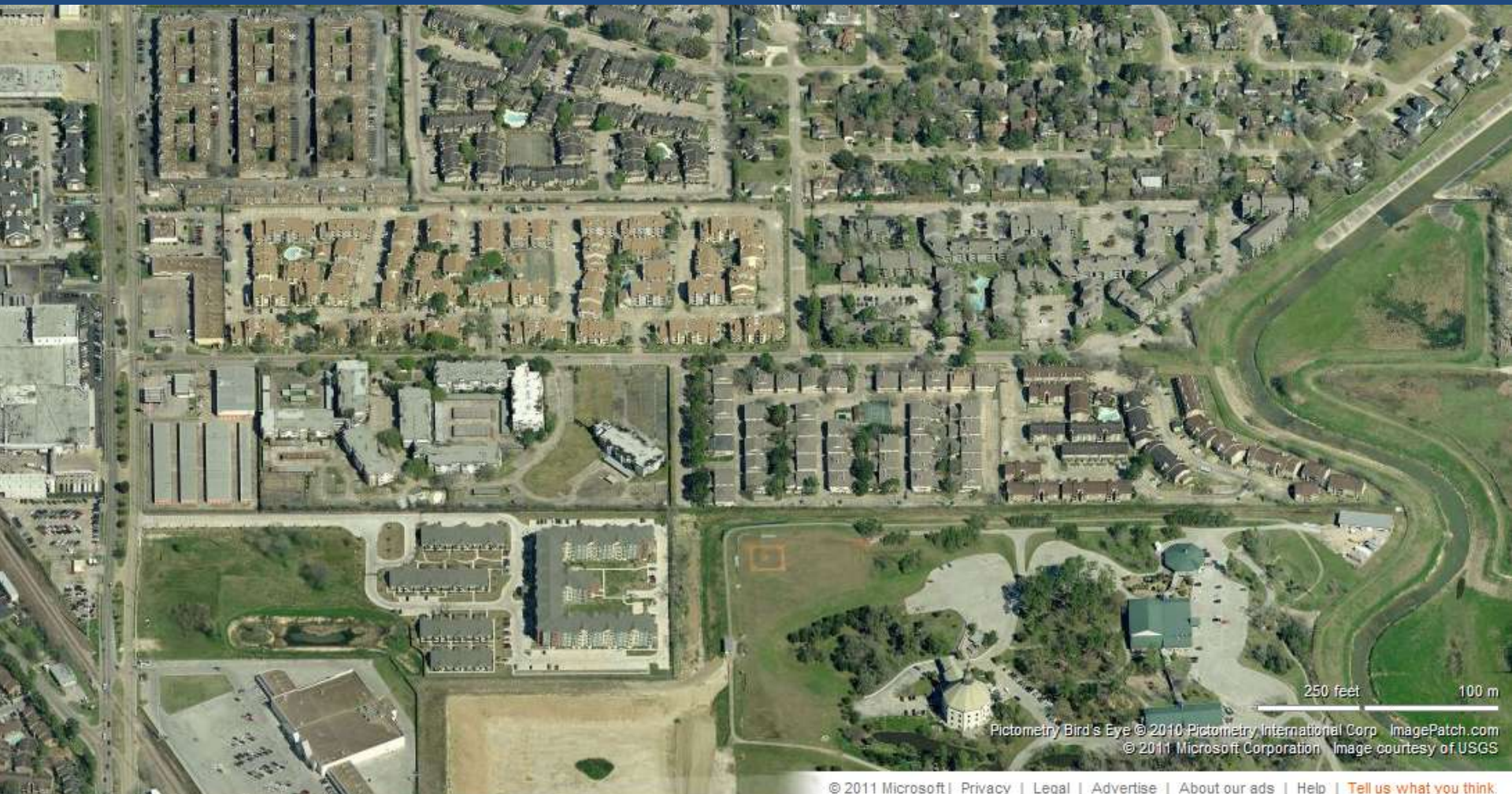
Opportunity: Raise awareness of water with public spaces and trails that trace it, landmark buildings that leverage investments overlooking it and bridges that celebrate crossing it.

Make parks and gardens a priority

Challenge: This is one of the most underserved areas of Houston in terms of park space.

Opportunity: Transform the area with a series of diverse parks linked in a green network, animated and accented by water.

Bayou Boulevard



Pictometry Bird's Eye © 2010 Pictometry International Corp. ImagePatch.com
© 2011 Microsoft Corporation. Image courtesy of USGS







Create a place that is a destination

Challenge: People have limited reasons to come to this area today.

Opportunity: Create a live, work, learn, visit and play lifestyle and sense of place that will be unique in Houston.

Antoine Gardens







CRUISES CRUISES
WOOD SUPERTRAVEL
713-957-TOUR





Transform an auto-centric strip into a street for people

Challenge: Tame traffic and transform the character of a strip dominated by vehicles, pavement and parking.

Opportunity: Redevelop the street edge with active public spaces and pedestrian-friendly commerce making it safe to walk and a place of identity and civic pride.

Five Bridges









