

CITY/NNMD

COORDINATION MEETING

**ANTOINE DR PAVING & DRAINAGE
US 290 To W. MOUNT HOUSTON**

WBS N-100030-0GEC-3

TxDOT CSJ NO. 0912-72-615

June 2nd, 2022



Personnel Intro

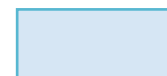
- City of Houston
- Gauge Engineering



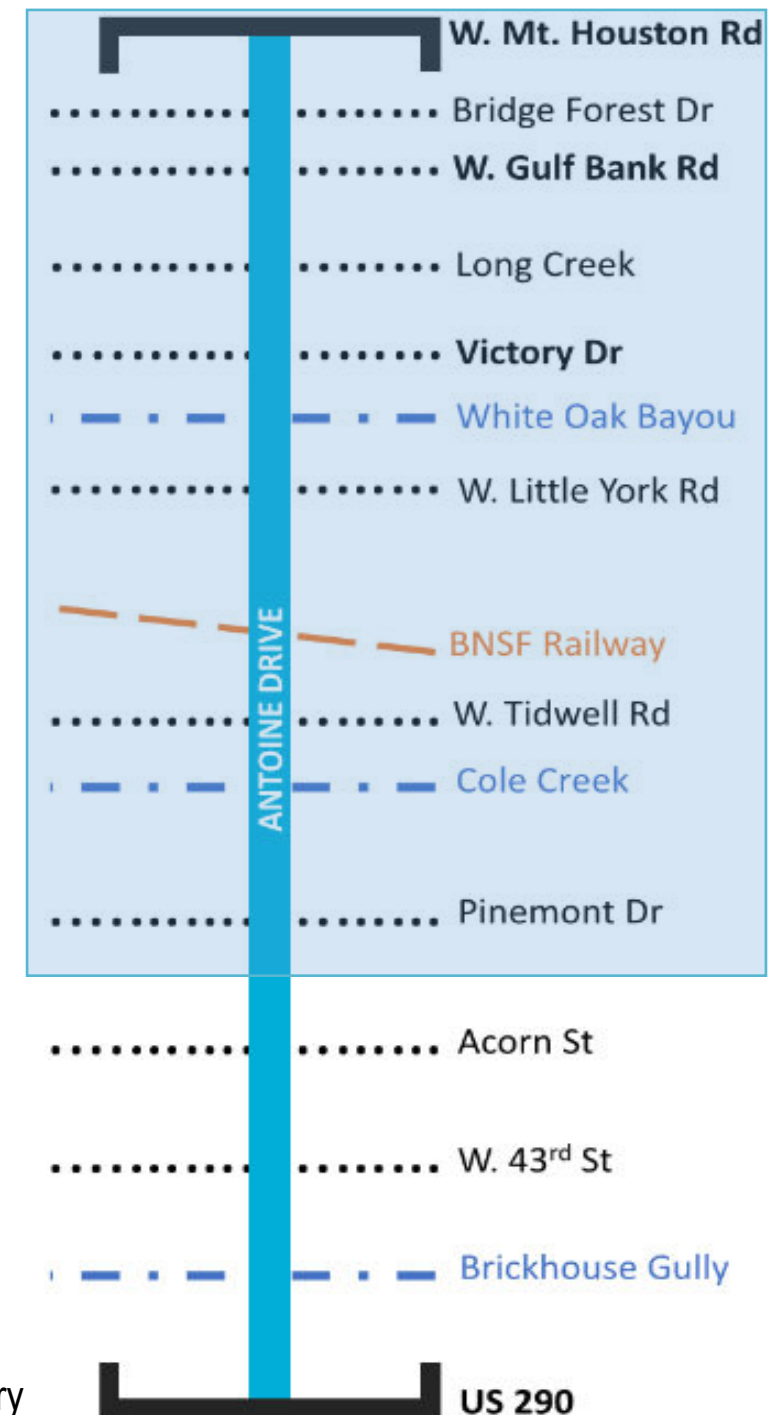
Project Overview & Scope of Work

- **Project Limits**
 - US 290 to West Mount Houston
 - > 5-miles of improvements
- **Scope**
 - Full Roadway/Drainage Reconstruction
 - Upgrade/Replacement Public Utilities
 - Replacement of Traffic Signals
 - Sidewalks/Bicycle Facilities
- **Benefits:**
 - North/South Mobility
 - Catalyst for Economic Development
- **NNMD Boundary**
 - Approx. 4.1 Miles within NNMD Boundary
 - 82% of Corridor

Legend



NNMD Boundary



Existing Conditions



Sidewalks - Poor Condition



Lack of Ped Ramps



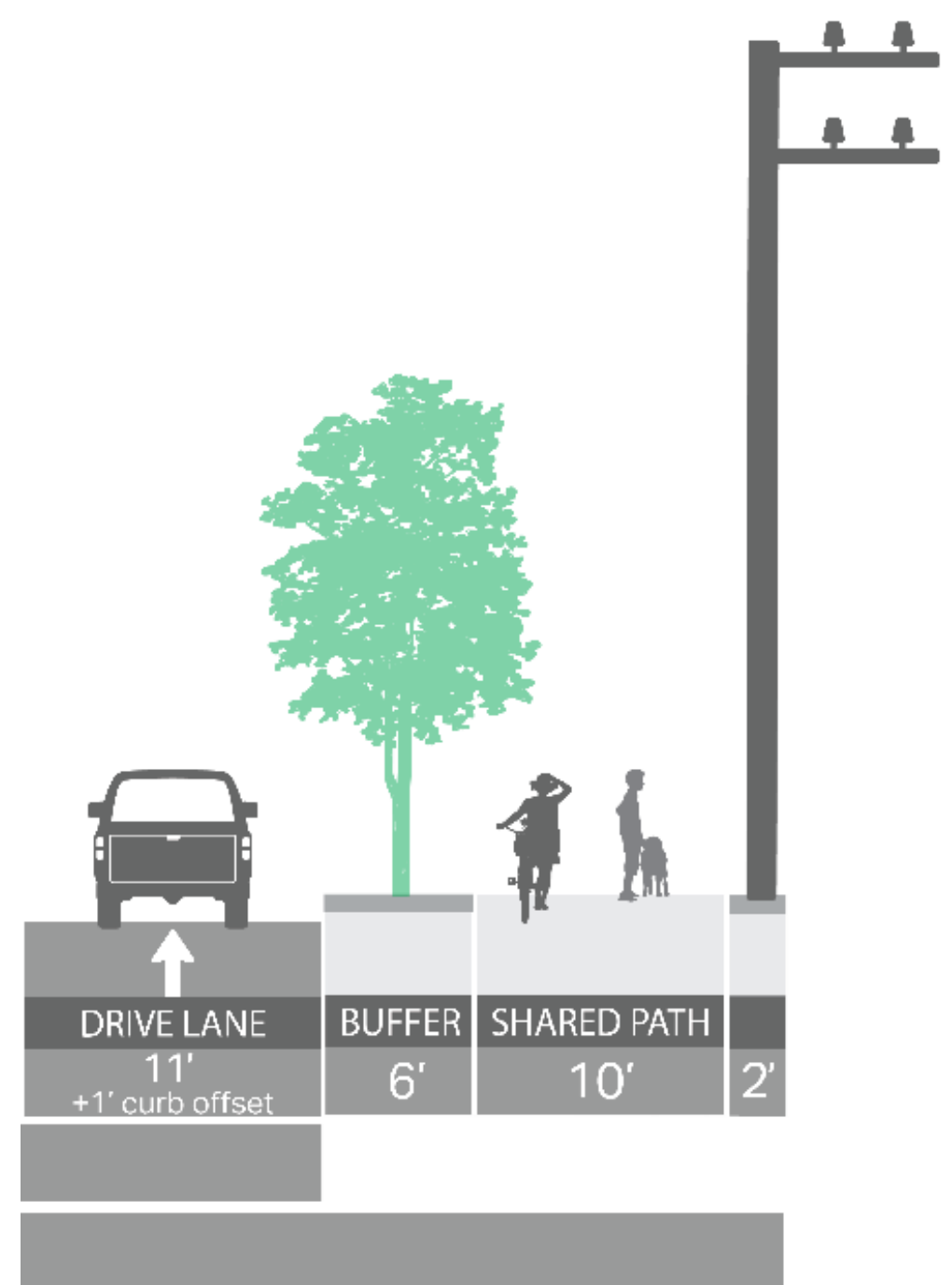
Poor Pavement



Narrow Bike Lane

Proposed Conditions

- 11-FT Lanes + 1-FT Curb Offset
- 10-FT Shared-Use Path



Bridges

Existing Bridges over Channels

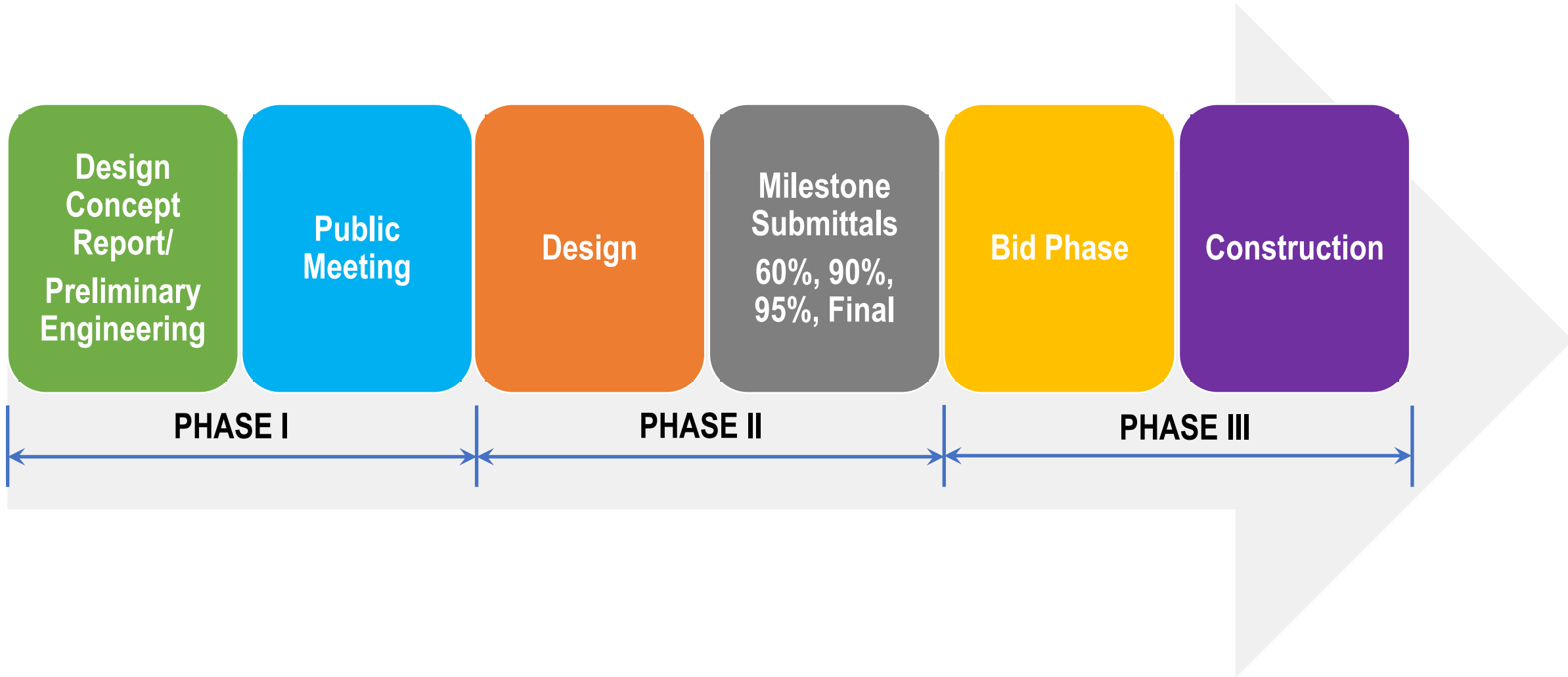
- 3-span bridge over [Brickhouse Gully](#)
(HCFCD Unit #E115-00-00)
- 3-span bridge over [Cole Creek](#)
(HCFCD Unit #E117-00-00)
- 6-span bridge over [White Oak Bayou](#)
(HCFCD Unit #E100-00-00)

Proposed Bridge over Railroad

- Proposed 5-span bridge over BNSF
(Burlington Northern and Santa Fe) Railway








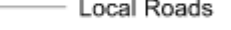



Current Status

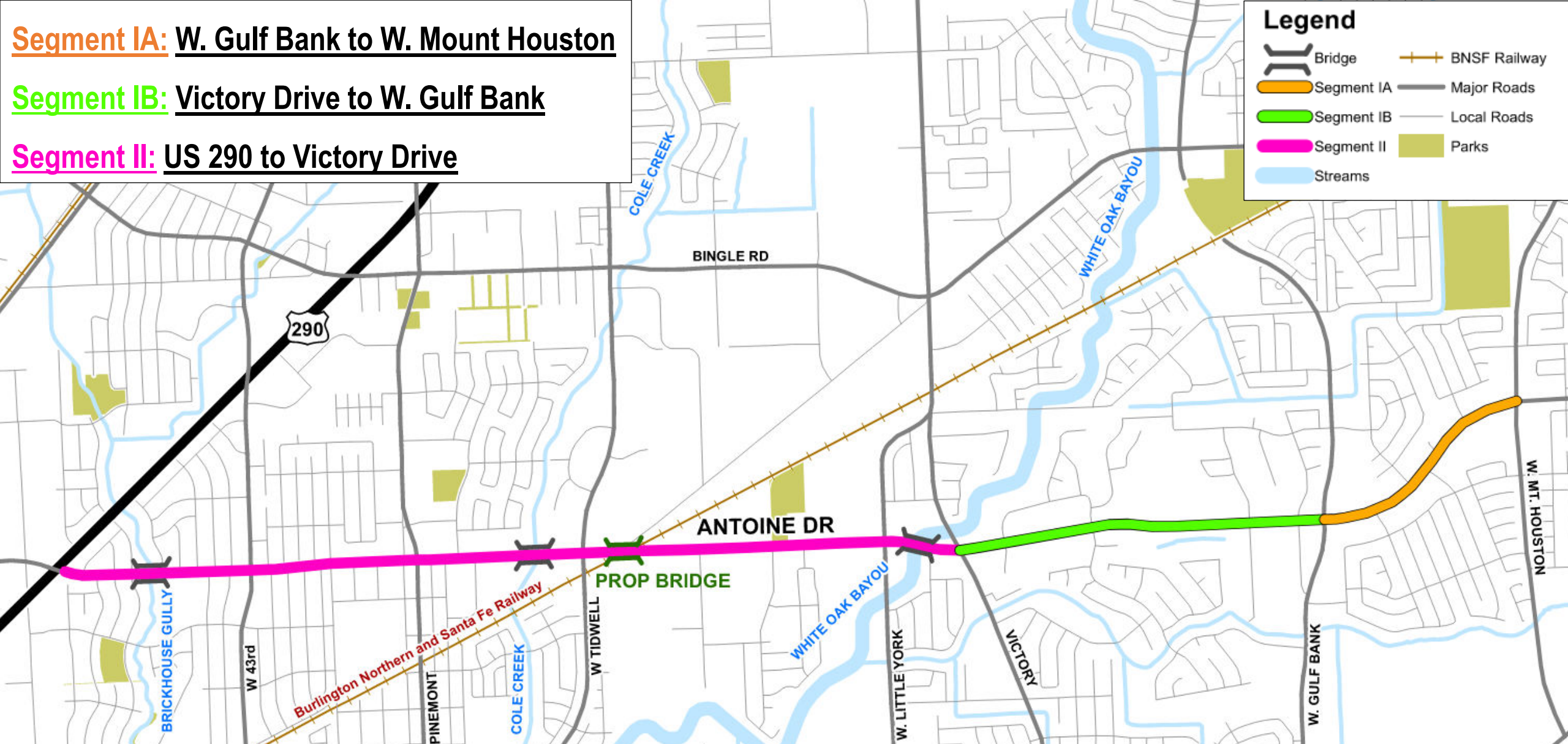


Proposed Construction Packages

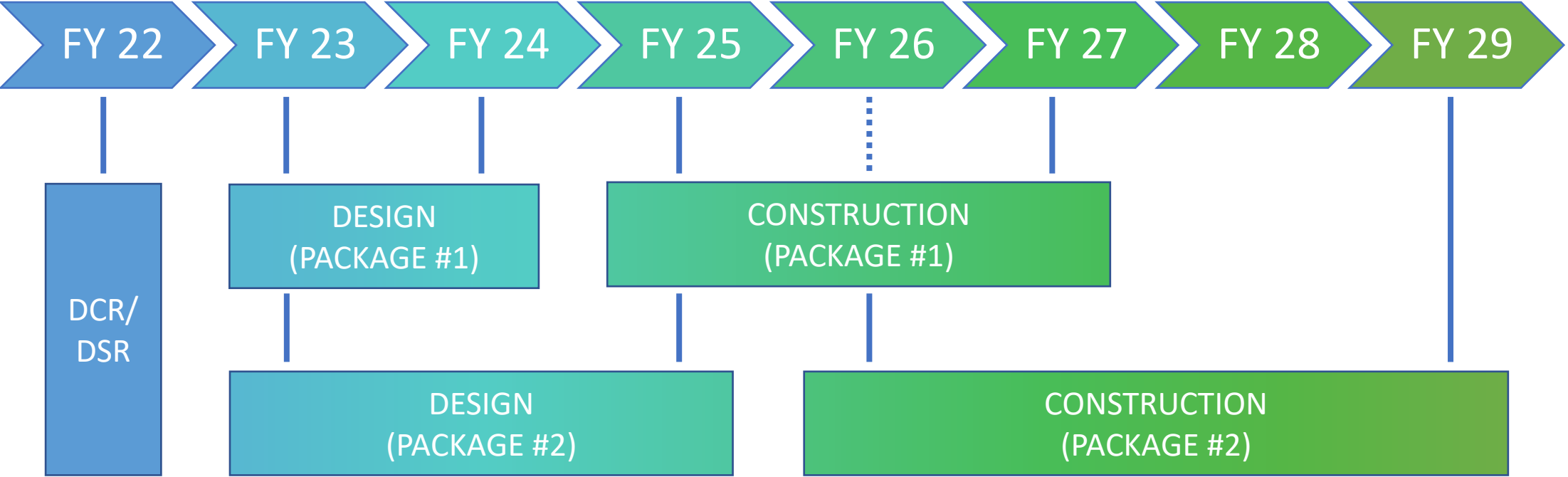
- Segment IA:** W. Gulf Bank to W. Mount Houston
- Segment IB:** Victory Drive to W. Gulf Bank
- Segment II:** US 290 to Victory Drive

Legend

	Bridge		BNSF Railway
	Segment IA		Major Roads
	Segment IB		Local Roads
	Segment II		Parks
	Streams		



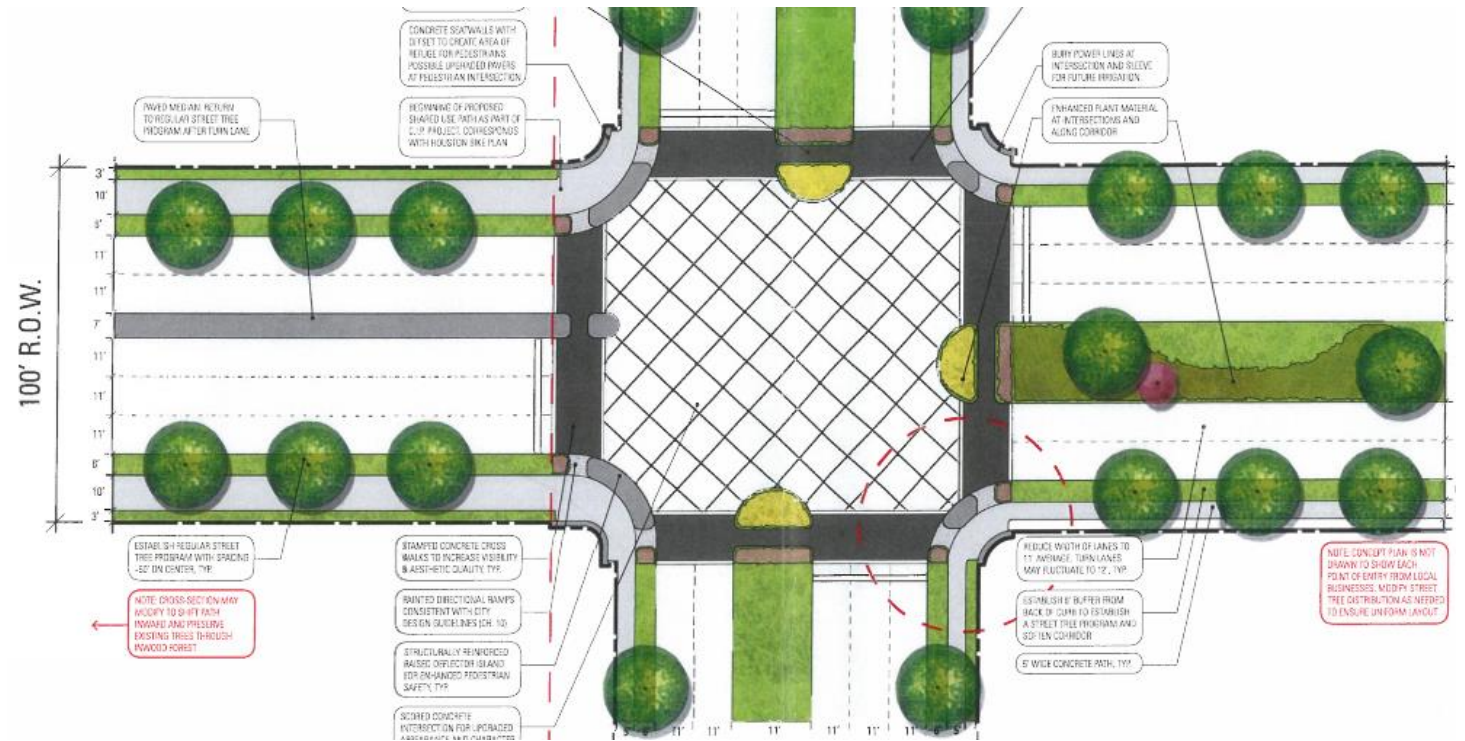
Design and Construction Anticipated Schedule



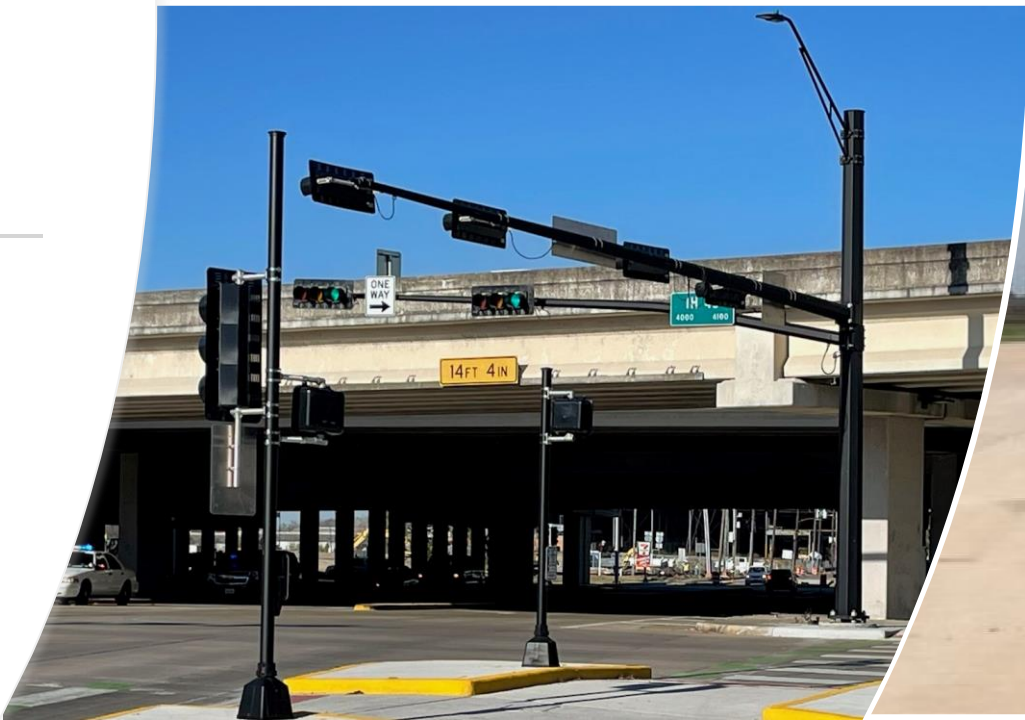
Note: City Fiscal Year – Starts July 1st

NNMD Enhancements

- Enhancements will be consistent with NNMD masterplan
 - Amenities
 - Hardscape/Softscape
 - Lighting/Traffic Signals
 - Branding
 - Irrigation

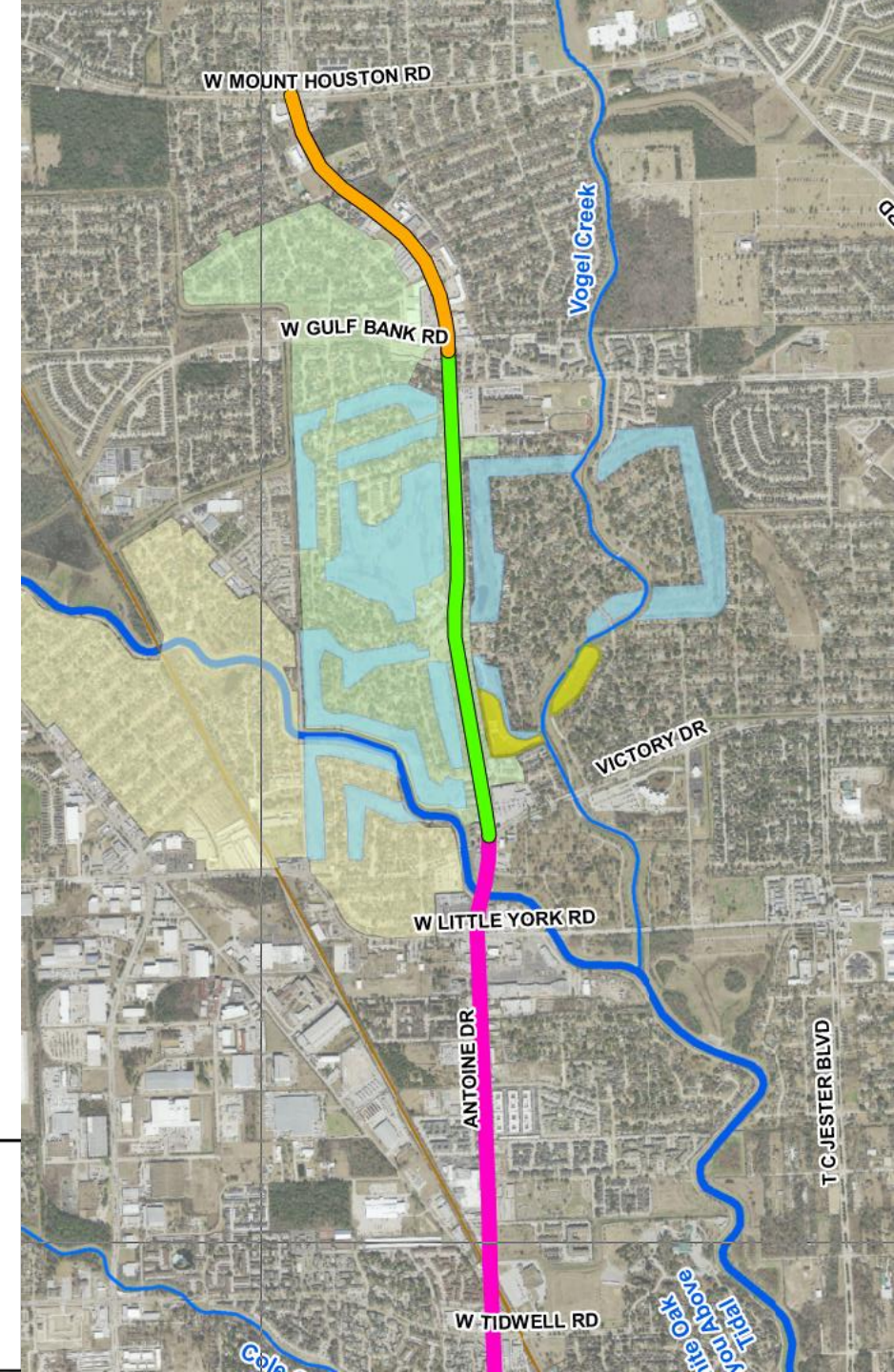
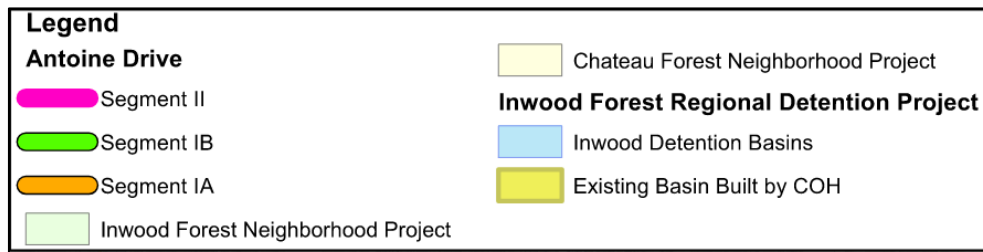


Examples



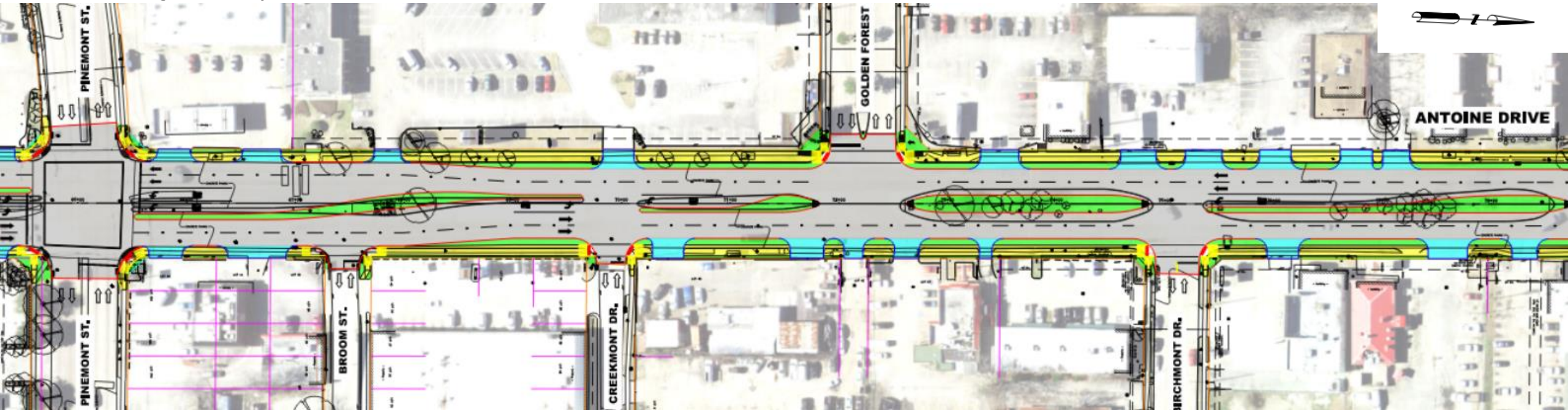
Adjacent Projects

- Little York Rd, Pedestrian Sidewalk Improvements
 - Status – Substantially Completed
- Inwood Forest Neighborhood Project
 - Status – Preliminary Engineering
- Chateau Forest Neighborhood Project
 - Status – Preliminary Engineering
- Inwood Forest Regional Detention Project
 - Status – Nearing Construction



Access Management/Driveways

- Median Openings will be Evaluated During Detailed Design
 - Tree Preservation will be a priority
- Driveways Construction/Closure
 - Will be coordinated with Property Owner
 - Closing one Driveway at a time
 - High-Early Concrete to be used if needed





QUESTIONS

ANTOINE DR PAVING & DRAINAGE

WBS N-100030-0GEC-3

TxDOT CSJ NO. 0912-72-615

