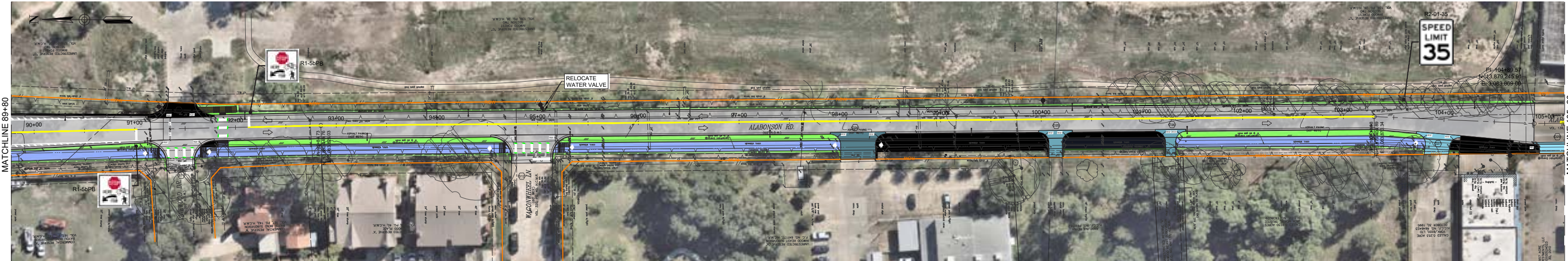
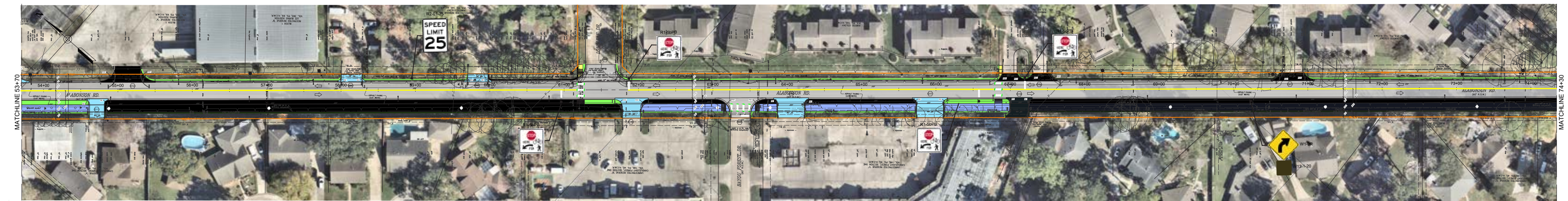
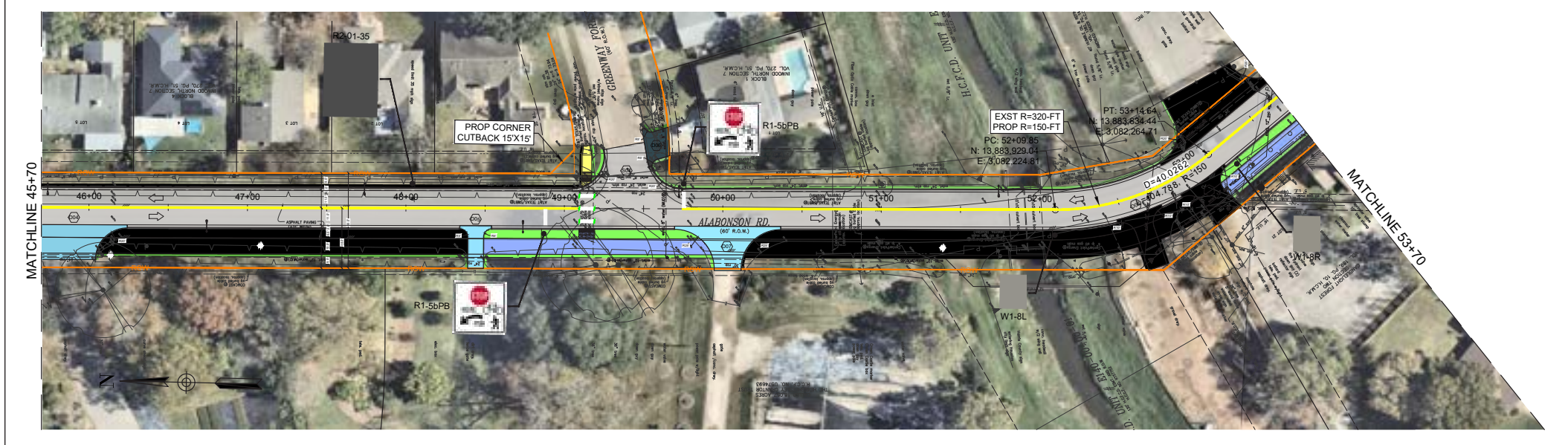
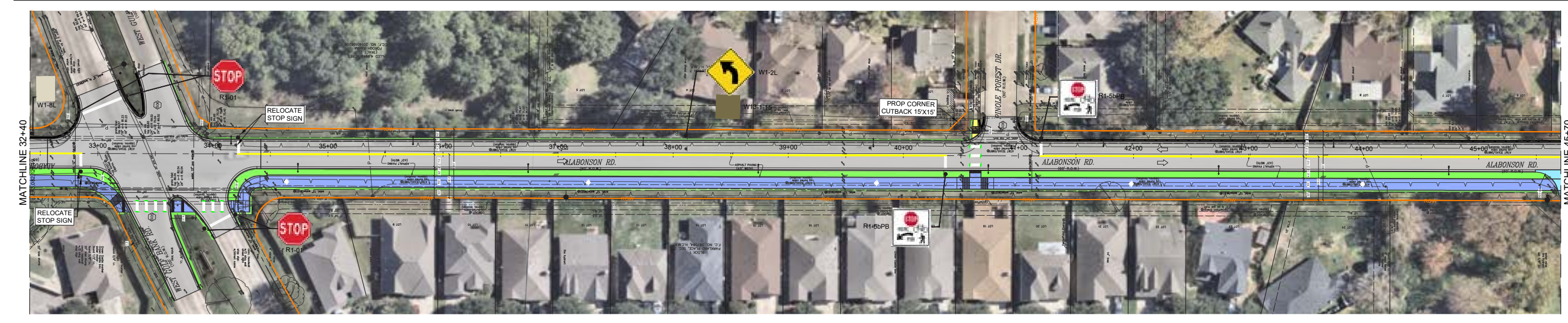
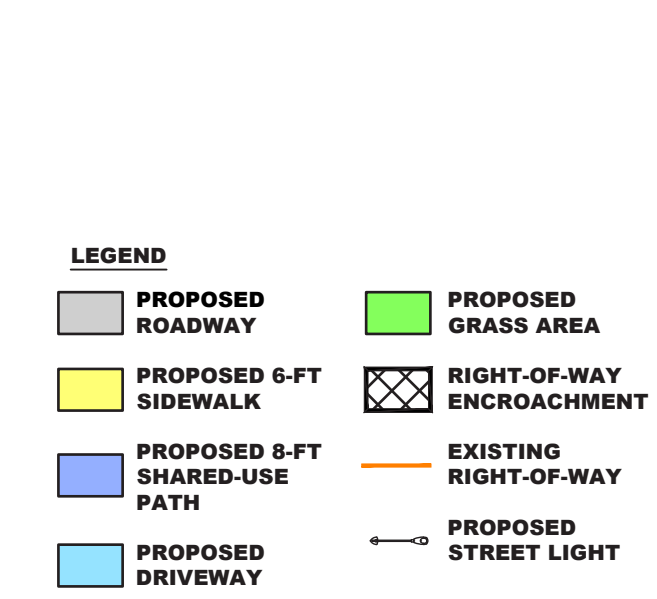
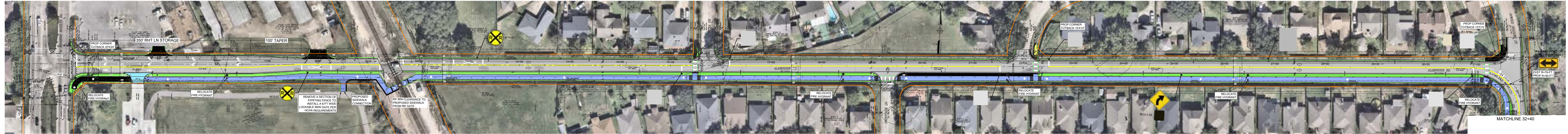


NEAR NORTHWEST MANAGEMENT DISTRICT Alabonson Road Reconstruction



NND
NEAR NORTHWEST
MANAGEMENT DISTRICT

CORRIDOR LAYOUT



NEAR NORTHWEST MANAGEMENT DISTRICT

Alabonson Road Reconstruction



PURPOSE

The Alabonson Road Reconstruction Project will reconstruct failing pavement and create a well-lit, seamless, safe, and accessible multimodal corridor connecting residents to recreational facilities, commercial areas, activity centers, METRO bus routes, local schools, and various other destinations.

EXISTING CONDITIONS

EXISTING GEOMETRY

60-ft right-of-way
Two-way two-lane road
11-ft wide lanes

Asphalt pavement
Minimum/no shoulder
Open ditch on both sides

DESIGN SPEED

35 mph

LENGTH

2.06 miles

ROADWAY CLASSIFICATION

Minor Collector

JURISDICTION

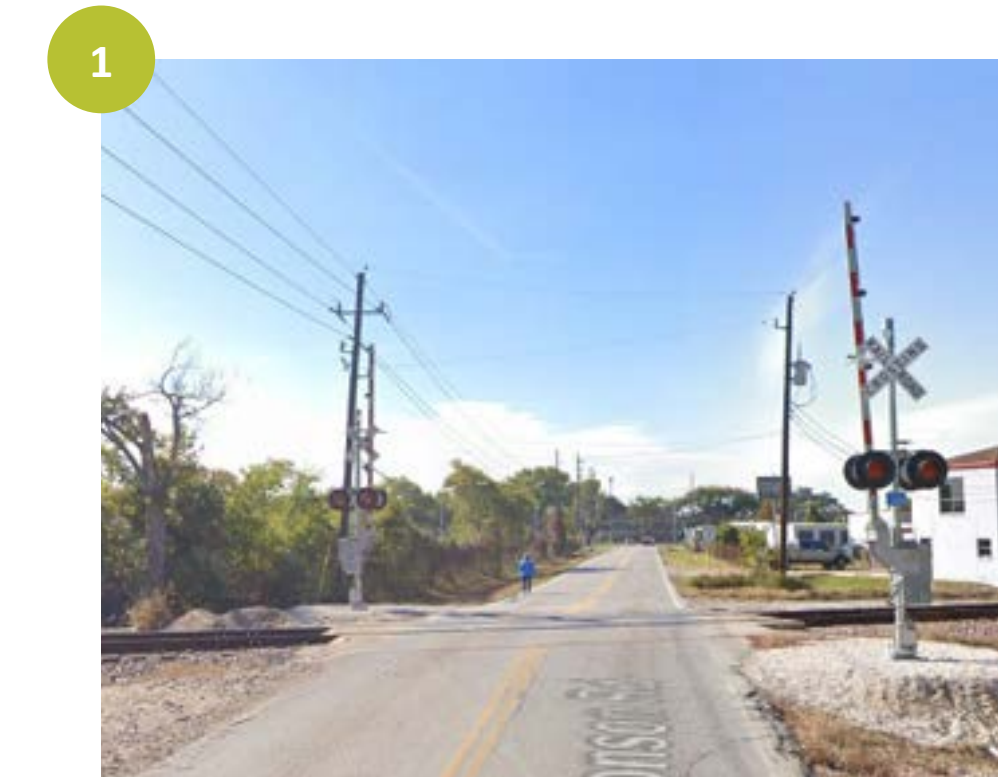
City of Houston & Harris County

NOTES

- Alabonson Road is a north-south facility between North Houston Rosslyn Road and West Little York Road/Victory Drive
- Outdated design/does not meet Americans with Disabilities Act (ADA) standards and does not meet best practices
- Two-lane asphalt road with pavement conditions ranging between fair to poor
- The corridor features deep ditches, lacks sidewalks, has narrow to no shoulder, and is poorly lit
- People walk along and cross the road to access various destinations
- Safety concerns for pedestrians and bicyclists

PROJECT LIMITS

North Houston Rosslyn Road to West Little York Road/Victory Drive Intersection



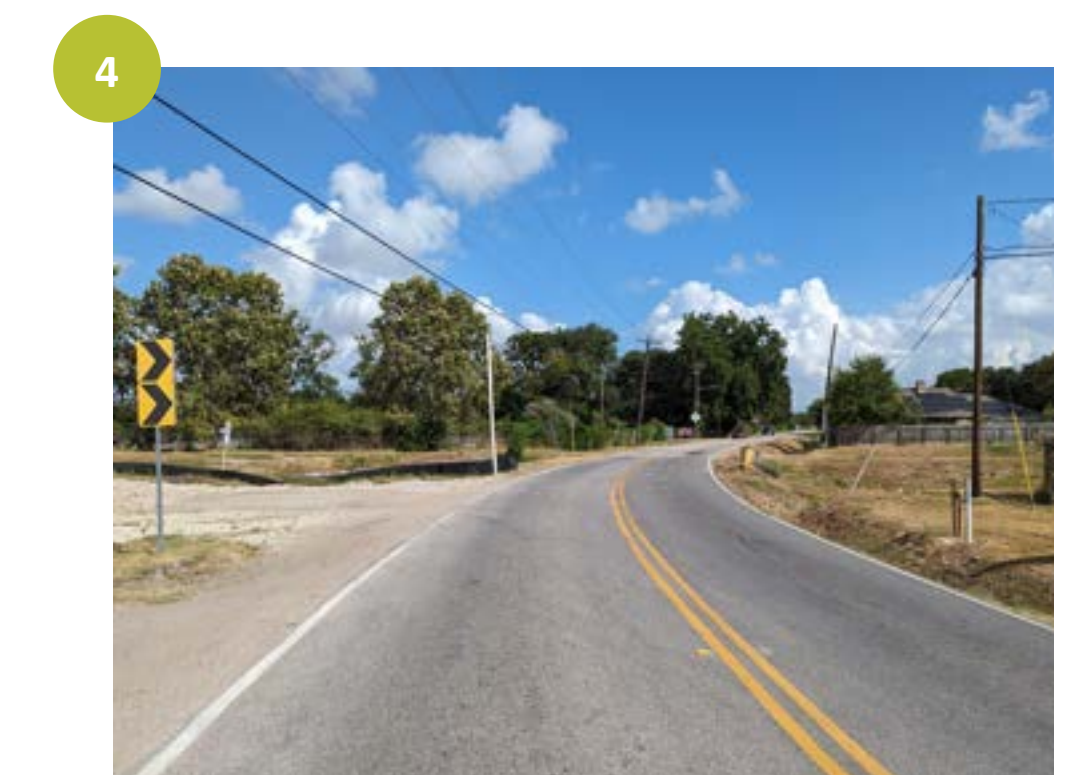
1 Pedestrian crossing railroad to access Alabonson Park (Source: Google Street View)



2 Poorly lit intersection of Inwood Shadows Street and Alabonson Road



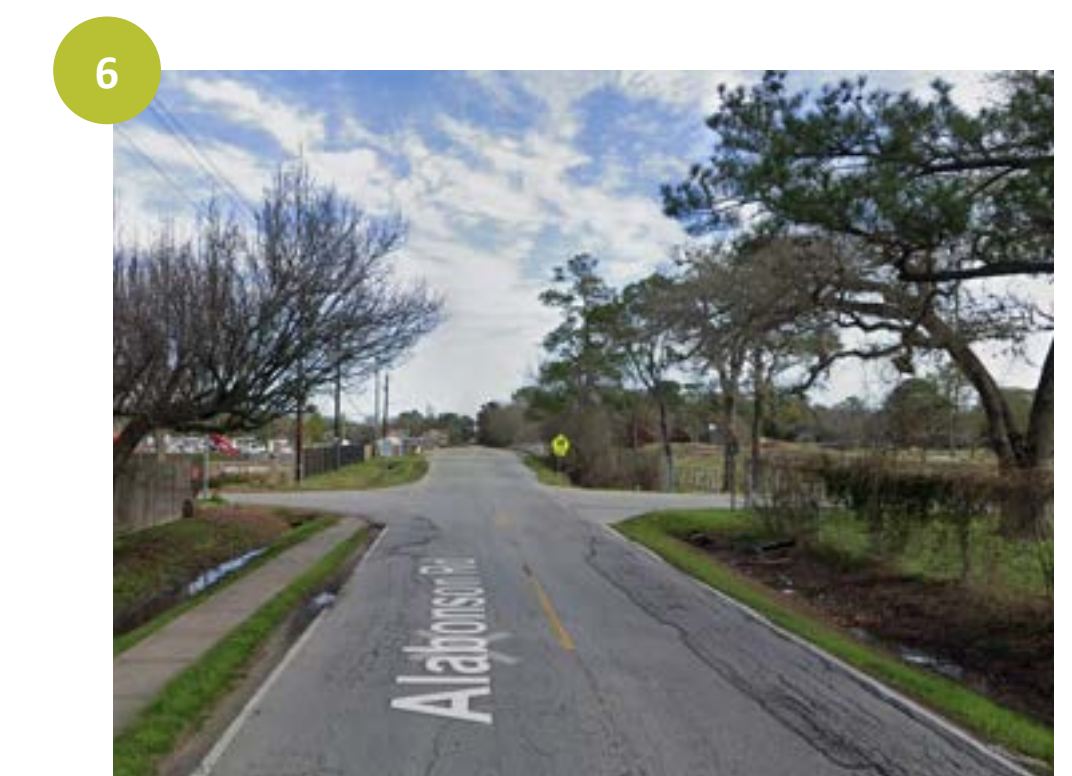
3 Intersection of West Gulf Bank Road & Alabonson Road



4 Ditch crossing

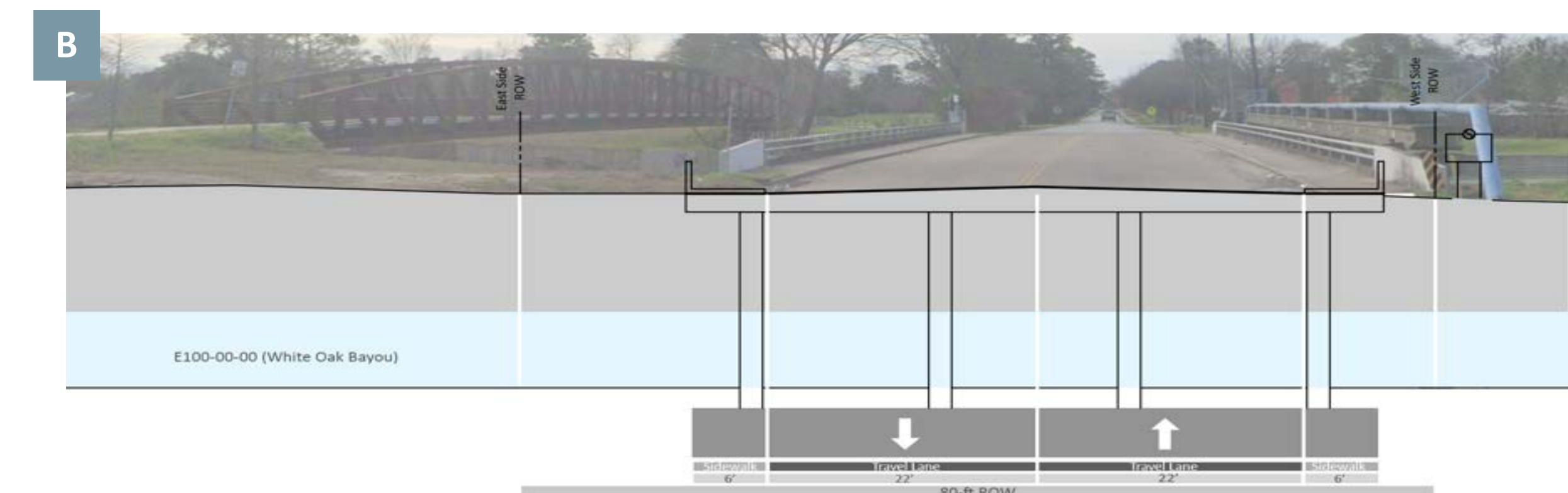


5 Pedestrian trying to cross Alabonson Road (Source: Google Street View)



6 Discontinuous sidewalk and failing pavement

EXISTING CROSS-SECTIONS



NEAR NORTHWEST MANAGEMENT DISTRICT

Alabonson Road Reconstruction



NEED

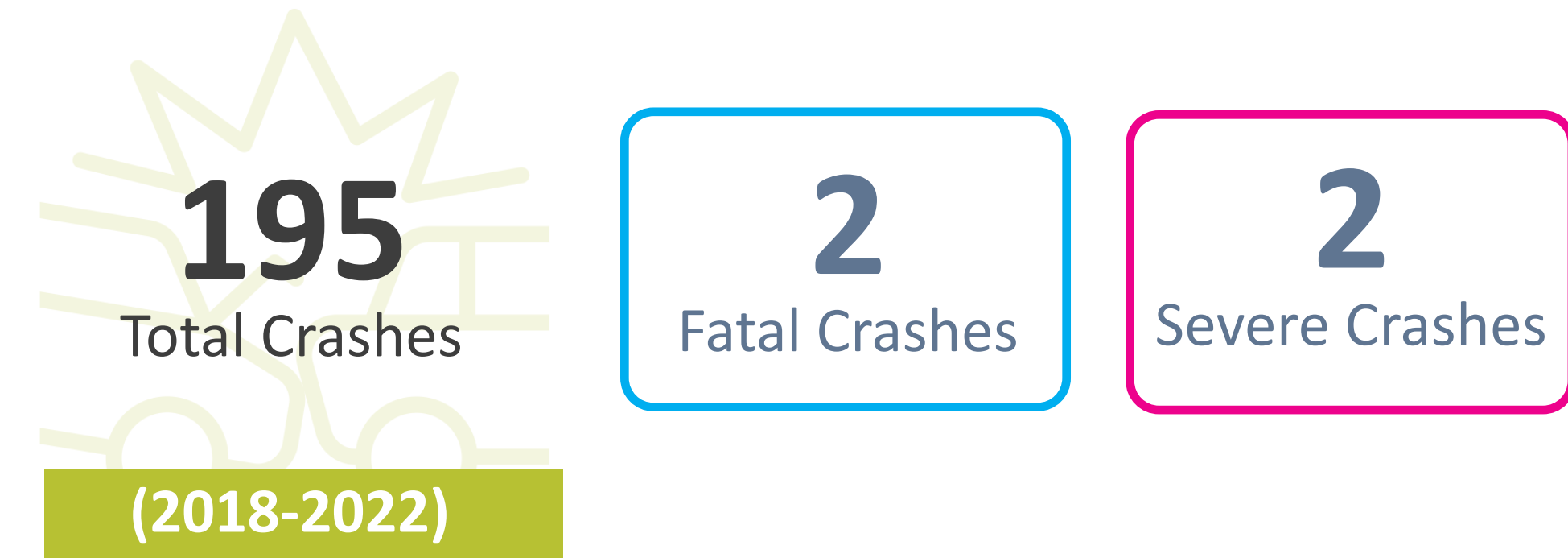
Why is this project important?

- Connect underserved communities and activity centers
- Fill gaps and enhance connectivity for bicyclists and pedestrians
- Provides multi-modal facility to connect important destinations
- Provide safe streets for all
- Improve travel experience - Improve area aesthetics and economic vitality
- Important step towards realizing Vision Zero goal

OVERALL PROJECT NEED FROM PERFORMANCE BASED MOBILITY STRATEGY



CRASH DATA

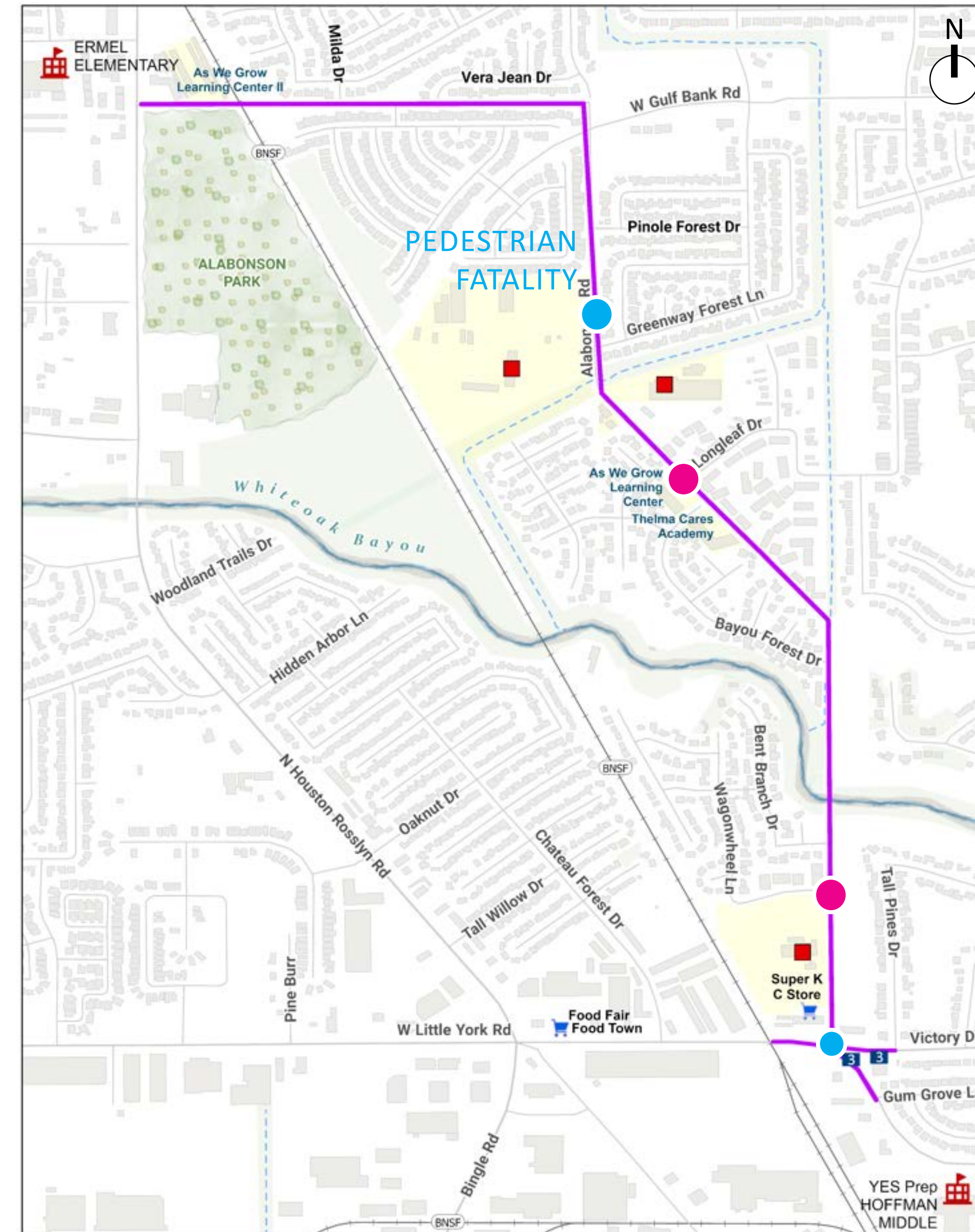


How to remove barriers for the community?

- Advance policy goals: Safety, Accessibility, & Equity
- Upgrade outdated infrastructure to meet current design standards
- Improve safety as the corridor is on a high injury network (HIN)

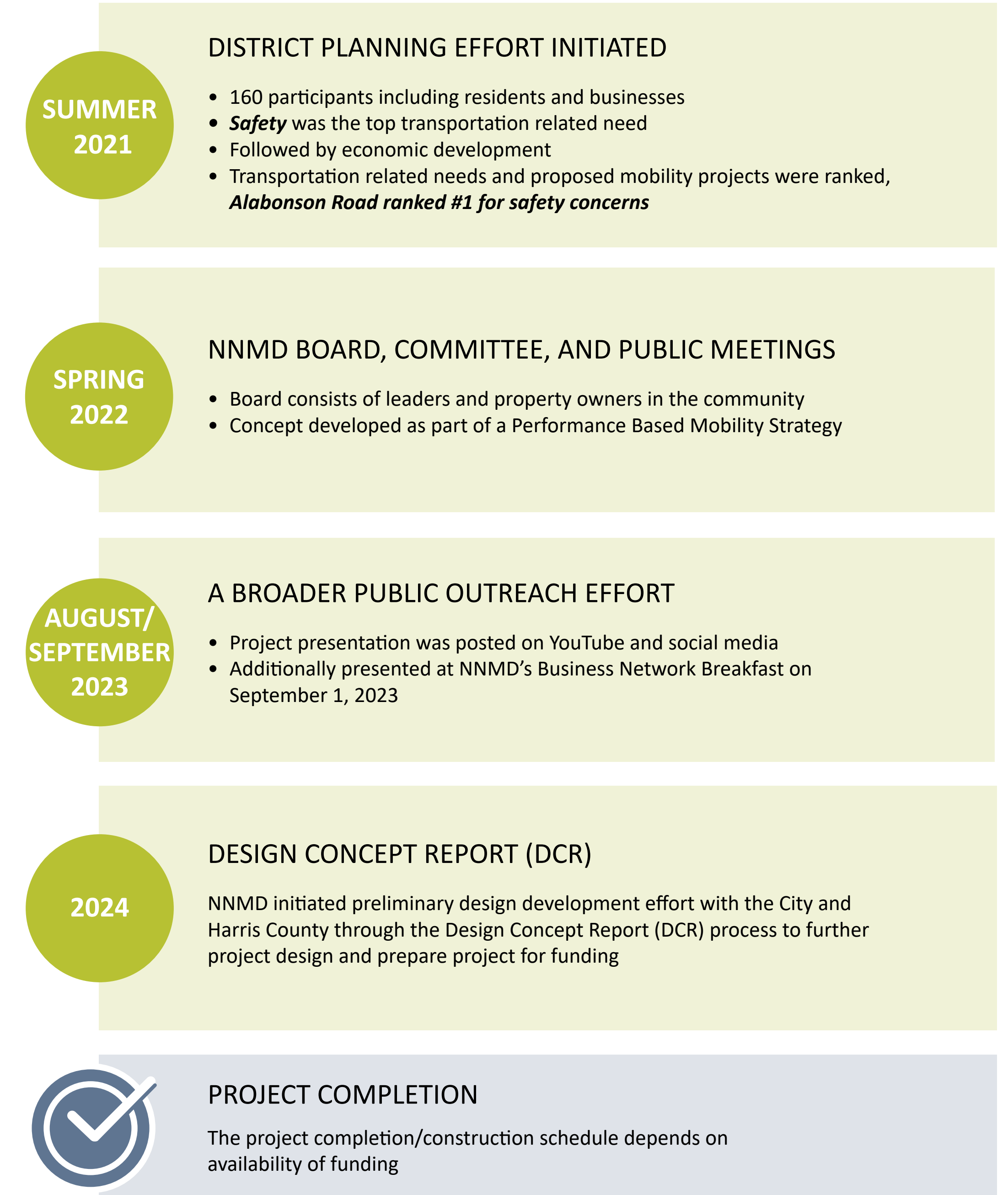
ACCESS TO (WITHIN QUARTER TO HALF-MILE RADIUS):

- Green Spaces:** Alabonson Park and White Oak Bayou Greenways Trail
- Schools:** Ermel Elementary School, As We Grow Learning Centers, Hoffman Middle School, Smith Elementary School, Harmony School of Endeavor
- Transit:** METRO Route 3 - Langley / Little York on Victory Drive and Route 85 - Antoine / Washington on Antoine Drive



— Alabonson Road Project Limits
■ Commercial/Industrial
● Fatal Crashes
● Severe Crashes
■ METRO Bus Stop Route#

PROJECT TIMELINE



PROJECT GOALS

- A safe, secure, and well-designed transportation system for all users
- Multimodal corridor to support strategic growth and a livable urban environment
- Improve access to transit and operation of existing intersections
- Support economic vitality for residents and businesses
- Promote environmental sustainability through alternative transportation modes and preserving existing trees

NEAR NORTHWEST MANAGEMENT DISTRICT Alabonson Road Reconstruction



PROPOSED IMPROVEMENTS

- Reconstruct existing asphalt paved roadway into a concrete paved curbed roadway
- Install 10-ft wide shared use path (SUP) on south and west side of the roadway
- Add street lighting, signage, pavement markings, and necessary traffic control measures
- Incorporate landscaping elements along the corridor to provide shaded areas for pedestrians and cyclists
- Install a safety buffer between the SUP and travel lane to enhance safety for all users
- Improve the intersection at North Houston Rosslyn Road with new crosswalks and a turn lane to enhance traffic flow
- Enhance the intersection at West Little York Road with crosswalks, median reconfigurations, landscaping elements, and access management for optimized traffic movement and improved safety

BENEFITS

Increased operational efficiency with bike and pedestrian facility

Optimized design for low maintenance and long-term cost savings

A safe and accessible multimodal corridor that reduces the occurrence of a crash

Enhanced aesthetics and sustainability through landscaping features

Improved connectivity to green spaces, schools, transit stops, and other key destinations

Economic benefits from a well-lit and connected corridor that promotes community engagement

PROPOSED CONCEPT FOR INTERSECTION OF ALABONSON ROAD & WEST LITTLE YORK ROAD/VICTORY DRIVE



- 01_ upgraded concrete sidewalk
- 02_ light upgraded concrete band
- 03_ dark upgraded concrete band
- 04_ mortared granite aggregate
- 05_ truncated domes
- 06_ proposed pedestrian refuge & upgraded sidewalk
- 07_ proposed planting
- 08_ art/signage opportunity
- 09_ existing trees to remain



01_ 6' GRAY CONCRETE SIDEWALK



02_ SANDBLASTED LIGHT GRAY UPGRADED CONCRETE BAND



03_ SANDBLASTED DARK GRAY UPGRADED CONCRETE BAND



04_ MORTARED AGGREGATE IN RAISED ISLANDS



05_ CHARCOAL GRAY TRUNCATED DOME WARNING TILES

PROPOSED CROSS-SECTIONS

